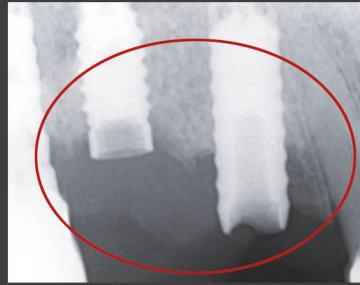
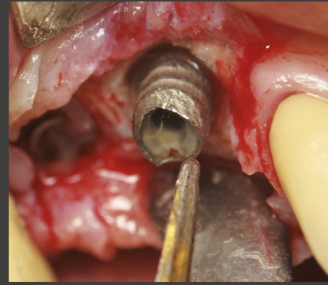


CLINICAL ILLUSTRATION

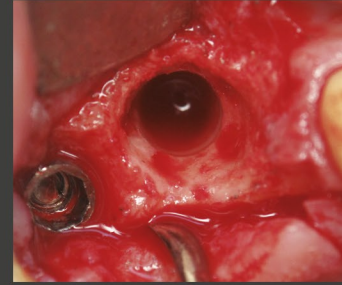
FRACTURED IMPLANT IMMEDIATE REPLACEMENT



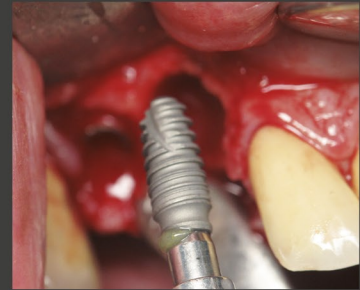
Position 14 broken dental implant (to remove)
Peri-implantite on the implant position 15
+ broken screw



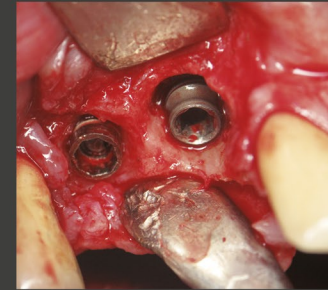
Implant removal
(piezosurgery)



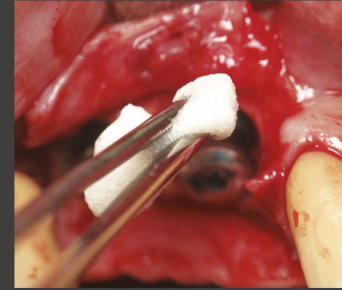
The residual crestal bone defect



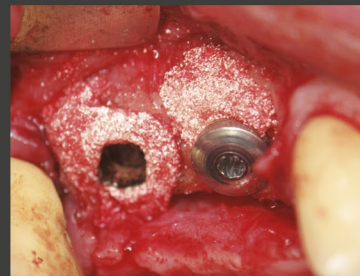
Preparation of the implant well and
Drive Synkron Implant placement
Ø 4 / L10



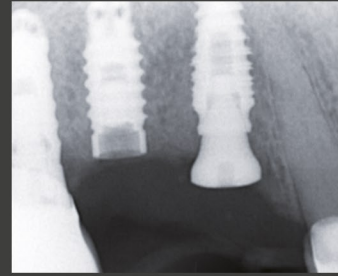
Sub crestal implant positioning
(bone defect around the implant neck)



Use of bone substitute biomaterial
DRIVE BONE*



Use of biomaterial (Drive BONE)
around implant neck and in the exudate lac



4 month Post op X-ray



4 month Post-op : 2nd time surgery
Cicatrization View
> Bio-Active™ Shield



Temporary prosthesis and prosthetic
part management



Temporary prosthesis placement
enabling soft tissues maturation



www.driveimplants.com
contact@driveimplants.com

CE
ISO 9001
ISO 13485

SYNKRONE

By DRIVE

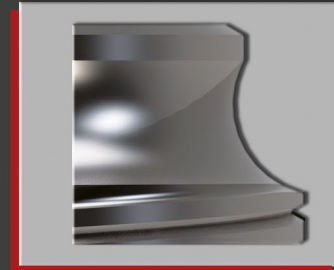
THE POST-EXTRACTIONAL IMPLANT

Perfect tightness
 Optimal mechanical resistance
 Similar connectic for the whole
 Ø4 et Ø5 Synkrone range
 Prosthetical range compatible with Drive
 Bio-Xellent implant



INDEXED CONICAL CONNECTIC

Bone Launching Pad™
 Crestal bone growth
 Switching platform

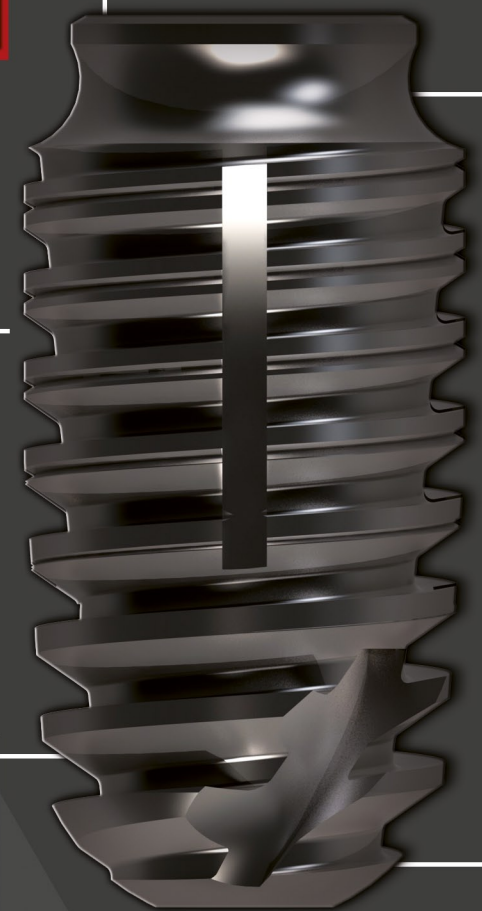


'NARROW NECK'

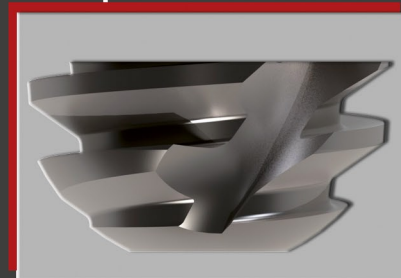
BODY



Cylindrical biconical body
 Double spiral asymmetric macro-thread for
 forces spreading optimization
 Variable and progressive threads depth for
 an excellent primary stability

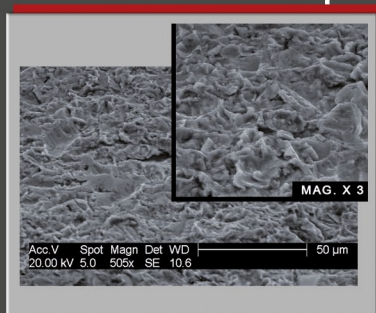


DRIVING PITCH



Implant guidance in the drilling well
 Self-tapping and compressing effect
 Atrauma Apex for a sub-sinus loading

SURFACE

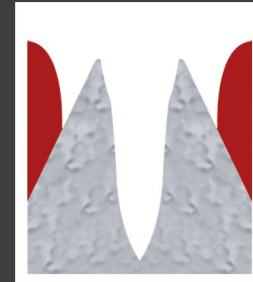


Rugous osseo-conductive surface
 (alumina technology Ra=1u)

OBSERVATION

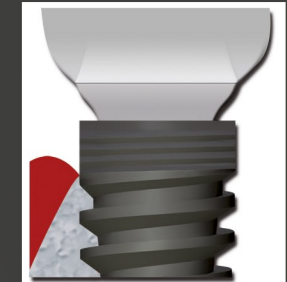
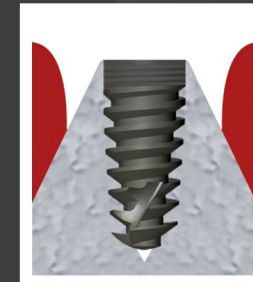
Currently, Post-extractional Implantology usually requires implants which neck diameter is identical to upper body part.

This specification can be harmful in case of thin residual crest, and might cause a peri-cervical bone loss and a secondary soft tissues retraction, around the implant neck.



USUAL IMPLANT POST-EXTRACTIONAL PLACEMENT
 (conventional implant)

- Neck width in the body extension
- Switching platform or not



AFTER PLACEMENT

> Vestibular bone loss causing a gingival recession and an aesthetic failure.

INNOVATION

The unique patented Design Synkrone Implant is fitted with a thinner "chimney neck" than the body.

Restraints elimination at the cervical bone level

Neck design enabling bone graft stabilization

Post-extractional cervical bone growth



Cervical bone growth satisfies biological requirements and takes advantage of at least 1,2 mm bone for the soft tissues preservation. This tends to decrease tissues absorption delay as to optimize aesthetic result.