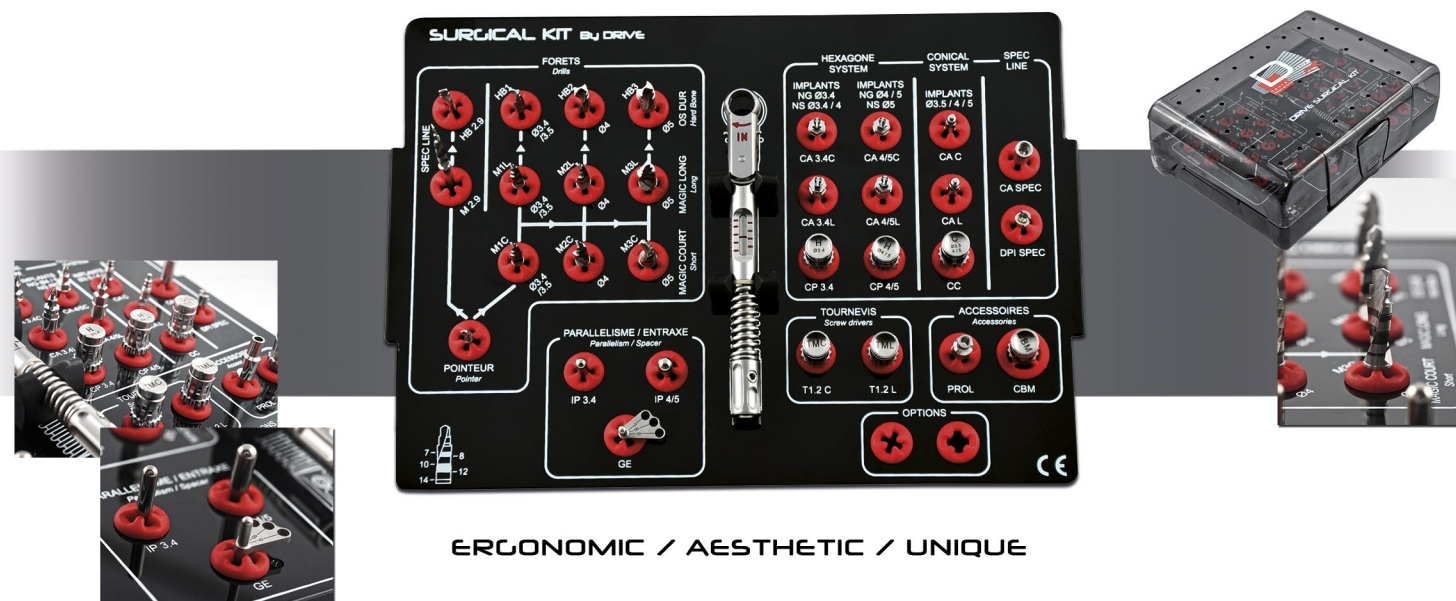


# DRIVE SURGICAL KIT

Only 1 surgical kit for all Drive Implants systems : Conical System / Internal Hexagon / External Hexagon

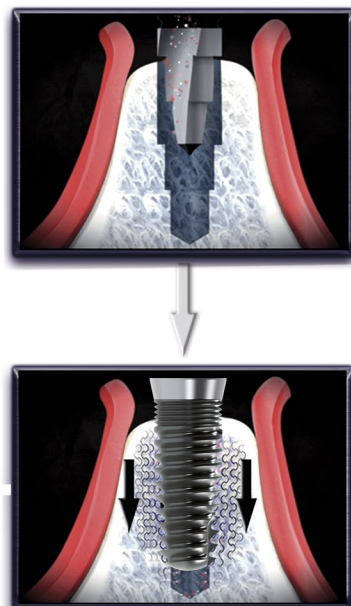


ERGONOMIC / AESTHETIC / UNIQUE

## MAGIC™ DRILL

### SIMPLIFIED SURGICAL PROCEDURES

- Leveled drill for the implantation well preparation (adapted to the implant conicity) enables bone compression around implant body while screwing > primary stability improved
- 2 drill-end lengths
- Laser marking for an easy drilling



The levels made by Magic™ Drill will enable the bone compression around the implant body for an excellent primary stability

## DRILL STOP KIT



Adjustable on MAGIC™ DRILL for a secured drilling depth

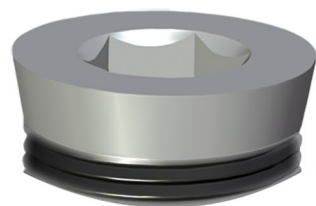
# N-GENERIC



DRIVE  
Dental implants  
www.driveimplants.com  
contact@driveimplants.com

CE  
ISO 9001  
ISO 13485

By DRIVE



**INTERNAL HEXAGON CONNECTIC**

- The implant body is topped by the implant neck in its coronary part and is located in the micro-threads continuity, enabling the biological distance respect (machined surface)

No joint at the bone level :  
=> 100% hermiticity



**MICRO-THREADS**

- Implant stabilization in the cortical zone  
- Improved resistance to forces by a better loads share  
- Sandblasted surface (corindon)

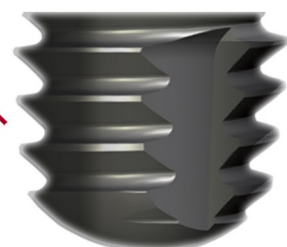


**MACRO-THREADS**

**EVOLUTIVE ASYMMETRIC SCREW-THREAD**

from the coronary part to the apical part  
- Cylindro-conical body  
- Self-tapping  
- Sandblasted

=> perfect primary stabilization



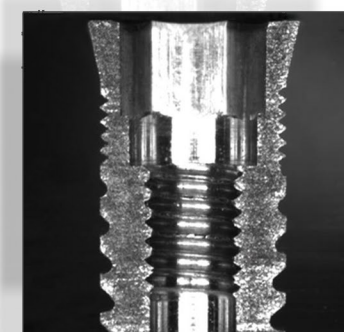
**CONICAL APICAL TOP-END**

Smooth and rounded off for a sub-sinus utilization  
Used as a guide for screwing and allows the implant locking

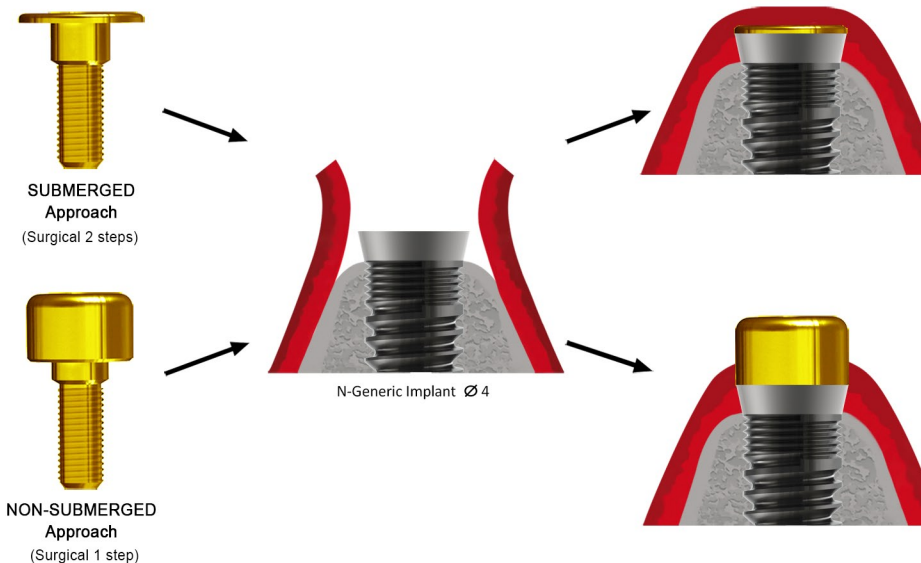
**INTERNAL HEXAGON CONNECTIC**

Stabilization of the prosthetic connection on 3 mm in the implant internal section (hexagon + cylindric part) assuring a perfect stabilization of the prosthetic piece :

- Decrease of any micro-moves (due to a maximal adaptation tolerance between the implant and the prosthetic piece)
- Optimal hermeticity
- Prosthetic junction away from bone crest (biological)



**- 2 POSSIBLE SURGICAL APPROACHES -**



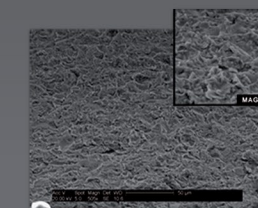
As to facilitate identification of Prosthetic diameter to be used, cover screw are anodized.

**N-GENERIC RANGE**

	Ø 3.4	Ø 4	Ø 5
	KIT DNG 3.4 / 8	KIT DNG 4 / 7	KIT DNG 5 / 7
	KIT DNG 3.4 / 10	KIT DNG 4 / 8	KIT DNG 5 / 8
	KIT DNG 3.4 / 12	KIT DNG 4 / 10	KIT DNG 5 / 10
	KIT DNG 3.4 / 14	KIT DNG 4 / 12	KIT DNG 5 / 12
		KIT DNG 4 / 14	



Machined surface



BioActiv sandblasted surface

Machined-surface Implant neck

Low rugosity to improve epithelial attachment clinical experience

Ra improvement for an ideal osseo-integration