

POINTER

POINTER  
Ø 2.2 H7



- Pointer drill for the implantation well marking
- Drilling depth : 7 mm
- Secured drill depth

MAGIC™ DRILL

SHORT AND LONG



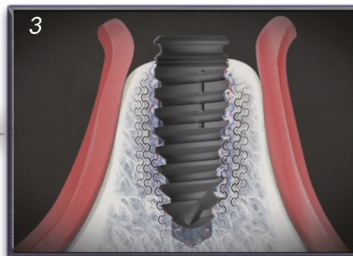
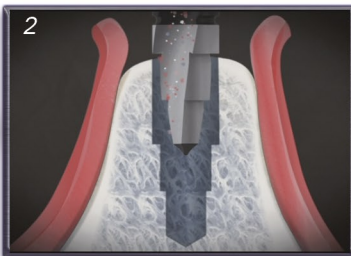
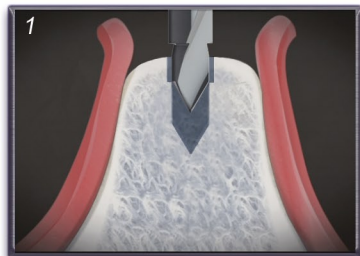
- Leveled drill for the implantation well preparation (adapted to the implant conicity) enables bone compression around implant body while screwing > primary stability improved
- 2 drill-end lengths
- Laser marking for an easy drilling

HARD BONE DRILL 'HB'

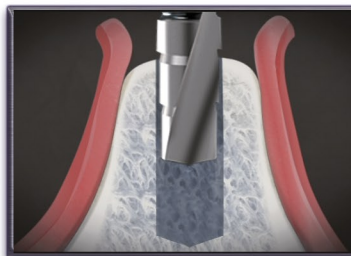
SHORT AND LONG



- Hard Bone Drill (D1/D2 Bone) allowing an over-drilling of the implantation well to facilitate the implants placement
- Drilling depth indicated with laser marking
- Bone collector
- Unsharpened drill end



The levels made by Magic™ Drill will enable the bone compression around the implant body for an excellent primary stability



Hard Bone Drill "HB" : over-drilling of the implantation well illustration on high density bones (D1/D2)



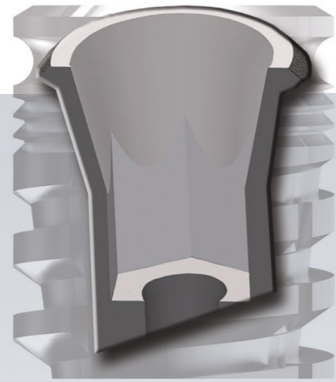
www.driveimplants.com  
contact@driveimplants.com

CE  
ISO 9001  
ISO 13485

By DRIVE

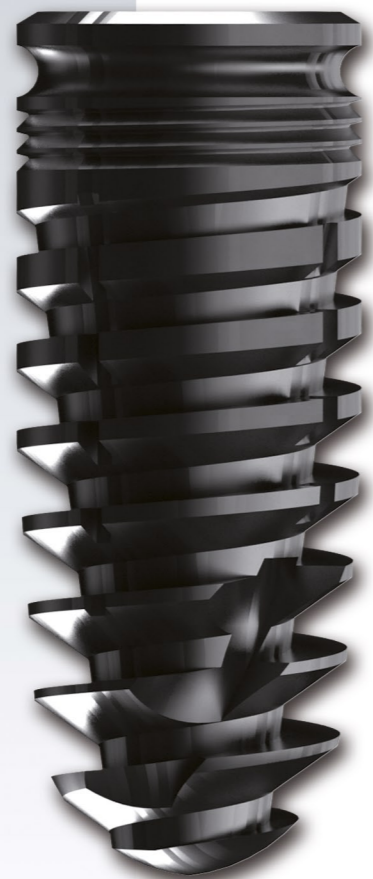
**BI-CONICAL DENTAL IMPLANT**

- UNIQUE PATENTED DESIGN -



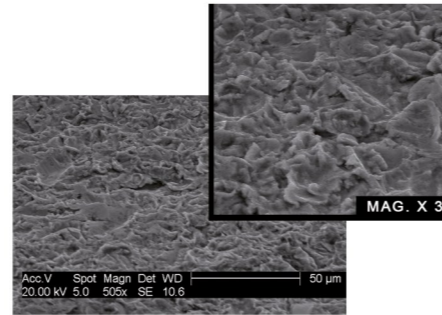
**INDEX CONICAL CONNECTION**

- Absolute hermiticity
- Optimum mechanical resistance
- Machine surface
- Indexation hexagon



**CYLINDRO BI-CONICAL BODY**

- Double conicity : 4° and 7°
- Opposite asymmetric path micro and macro thread
- Variable and progressive threads depth for an excellent primary stability
- Rugged osteo-conductor surface (alumina technology Ra=1u)

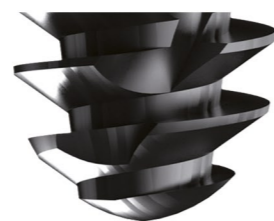


Ruguous osseo-conductive surface



**GROOVE-LOCKS**

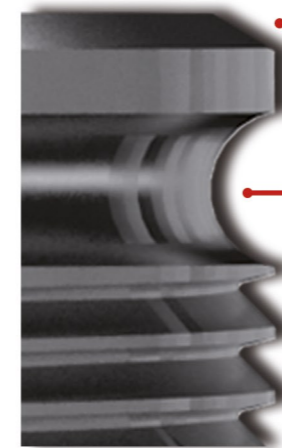
- Bone osseo-captation growth
- Anti-rotational locking performing



**DRIVING-PITCH™**

- Implant guidance in the drilling well
- Self-tapping and compressing effect
- Atrauma Apex for a sub-sinus loading

**THE "BIO-LOGICAL" CONCEPT**



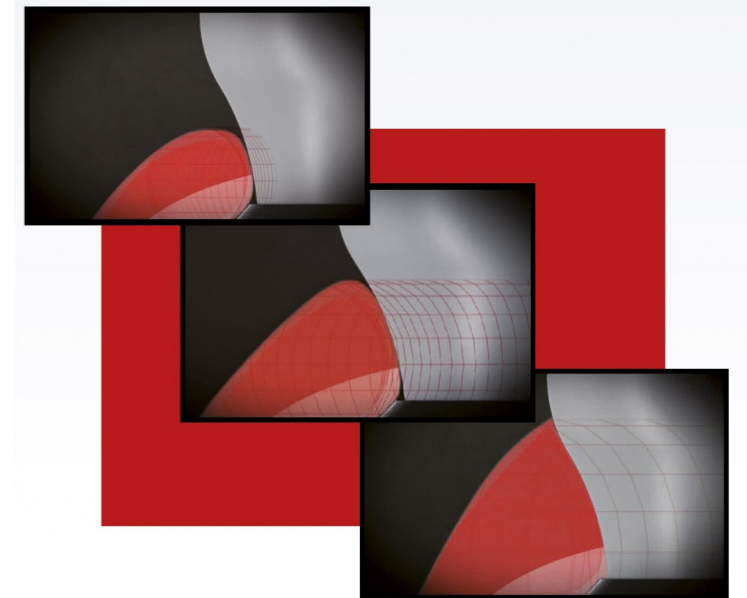
**GUM LAUNCHING PAD™**

**BONE LAUNCHING PAD™**



**GUM LAUNCHING PAD™**

- Peri-implant soft tissues stabilization and growth
- Aesthetic optimization



**BONE LAUNCHING PAD™**

- Creation of a real peri-cervical bone ring, improving bone and papilla support and helping crestal bone growth
- Exudat Lake (Blood, rejections, bone fragments : growth factors)

