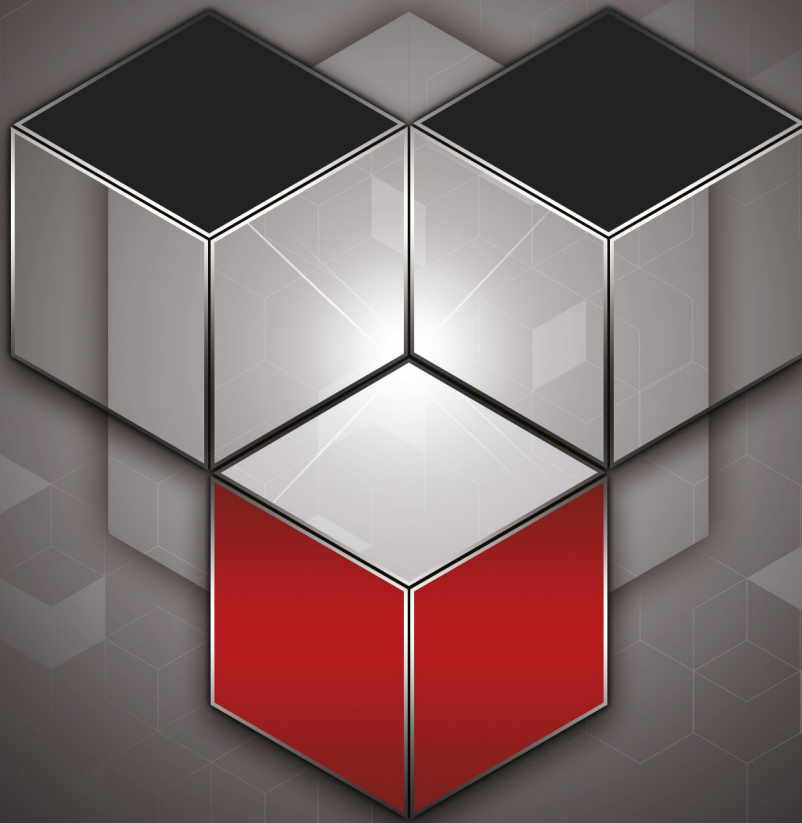


# DRIVE BIO-MAT

*By Biom'Up*



BONE REGENERATION MATRIX : DRIVE BONE

GUIDED TISSUE MEMBRANE : DRIVE COVE

# BONE SUBSTITUTE MATRIX

Hemostatic, resorbable and osteo-conductive

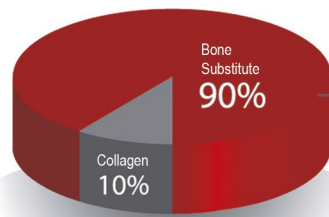
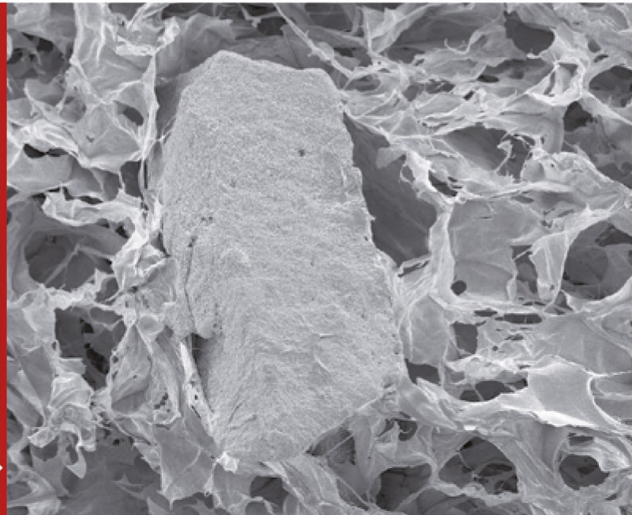
By Biom'Up

## Drive BONE :

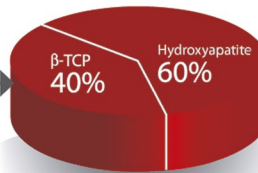
A hemostatic, resorbable, osteoconductive bone substitute matrix.

- Drive BONE BONE is a dispersed granular biphasic synthetic bone substitute in a collagen matrix (types I + III).

SEM: DRIVE BONE bone substitute granules and collagen matrix



Composition of DRIVE BONE



Composition of bone substitute phase (by weight)

- Two different particulate grades of DRIVE BONE are available :

• 80 to 200  $\mu$ m

• 0.5 to 1 mm

## Indications :

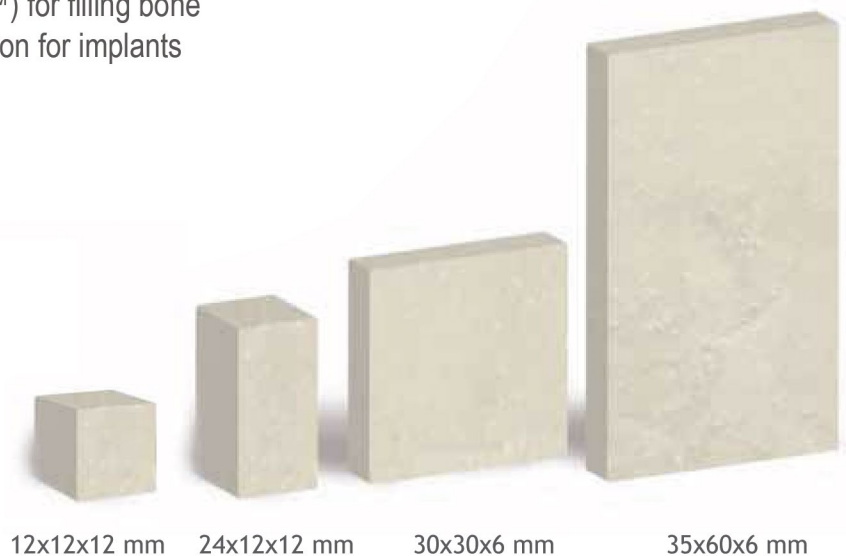
Drive BONE is indicated for use in bone augmentation and reconstruction :

- Filling of bone defects
- Reconstruction of the alveolar ridge
- In combination with guided tissue or bone regeneration products (e.g. Biom'Up's Cova™) for filling bone defects and sinuses in preparation for implants



Each single unit of DRIVE BONE is double packed sterilized by irradiation.

Dimensions (mm)	Re-order Code
	Size grading
12x12x12	80-200 $\mu$ m
12x12x12	DBONE 11 SD
24x12x12	DBONE 21 SD
30x30x6	DBONE 33 SD
35x60x6	DBONE 36 SD



12x12x12 mm

24x12x12 mm

30x30x6 mm

35x60x6 mm

## Drive Bone preparation :

1



1. Unitary packaging with traceability labels and product information



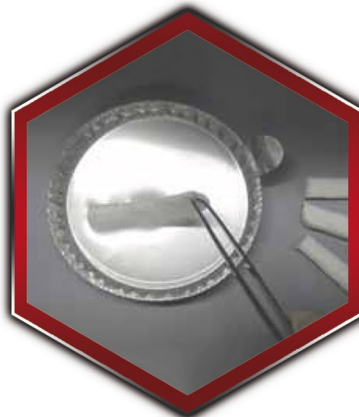
2. Double sterile packaging



3. Drive Bone has a soft and dry texture



4. "Chips" chop off



5. Hydrate Drive Bone 20 sec in a physiological serum or fibrin



Next to implantation time

## Drive Bone Implantation :

2

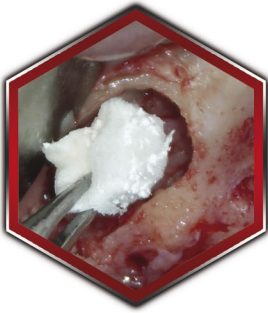
SINUS LIFT

## Lateral access

- Open bone flap and repress the Schneider membrane

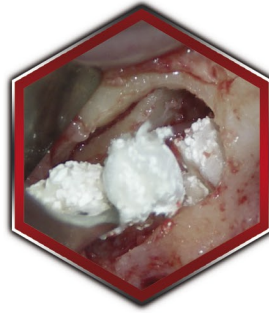


3



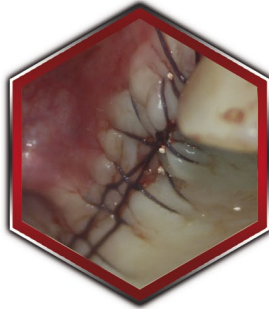
- Drive Bone Placement
- Insert with a gland leg elephant
- No bone granule migration

4



- Possibly recover with a Drive Cove membrane
- Hemostasis

5



- Proof-suture
- Edema absorption by Drive Bone

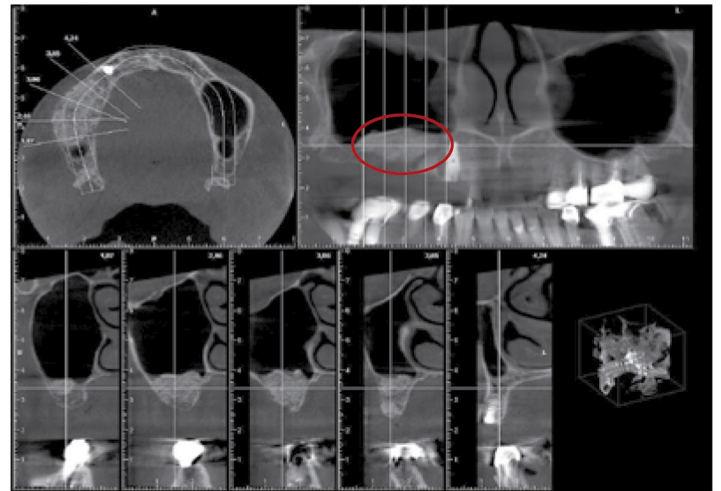
### Results :

#### Sinus Lift :



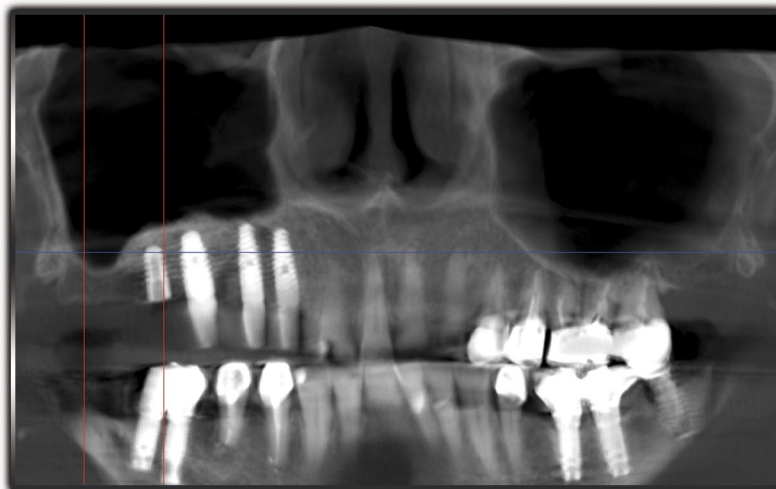
**BEFORE**

Cone Bean : panoramic view and coronal cuts showing volume to fill



**AFTER**

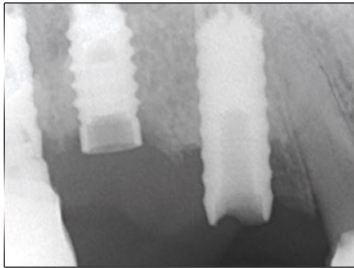
Cone Bean : Panoramic view and coronal cuts 4 months post-op showing the bone filling, the Type II bone quality



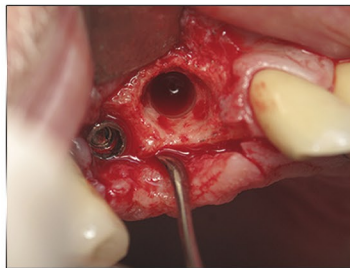
Panoramic view after implants placement

## The Bio-Active Shield : Crestal surrounding optimization

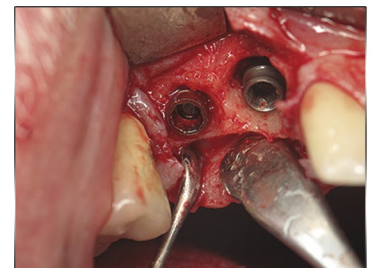
3 complementary elements : Bioxellent implant / high healing screw / Drive Bone



Position 14 broken dental implant (to remove)  
Peri-implantitis on the implant position 15  
+ broken screw



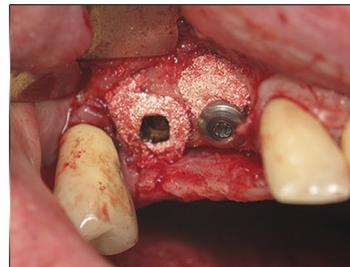
The residual crestal bone defect



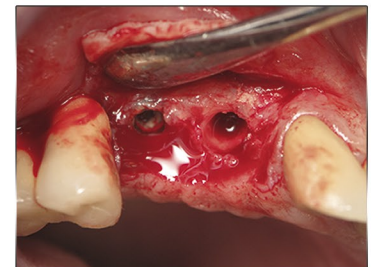
Sub crestal implant positioning  
(bone defect around the implant neck)



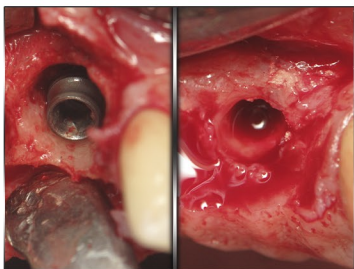
Use of bone substitute biomaterial DRIVE BONE\*



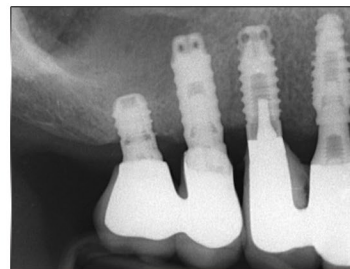
Use of biomaterial (Drive BONE)  
around implant neck and in the exudat lac



4 month Post-op : 2nd time surgery  
Cicatrization View  
> Bio-Active™ Shield



BEFORE AFTER



4 Month Post op X-ray



Temporary prosthesis placement  
enabling soft tissues maturation

The publication : " Notion of "Bio-Active shield" Peri-implant :  
"Drive Bone Advantage" published in Implantology Magazine,  
available on the website :

[www.bioxellent-implant.com](http://www.bioxellent-implant.com)



See the Drive Bone utilization in " The Clinical Case of the Month" on the website :

[www.driveimplants.com](http://www.driveimplants.com)

## Espace 14 training Program :

- See all our Training sessions on our Website :

[www.espace14-lecole.com](http://www.espace14-lecole.com)



# MEMBRANE OF GUIDED CICATRIZATION

Guided Tissue Regeneration and Guided Bone Regeneration

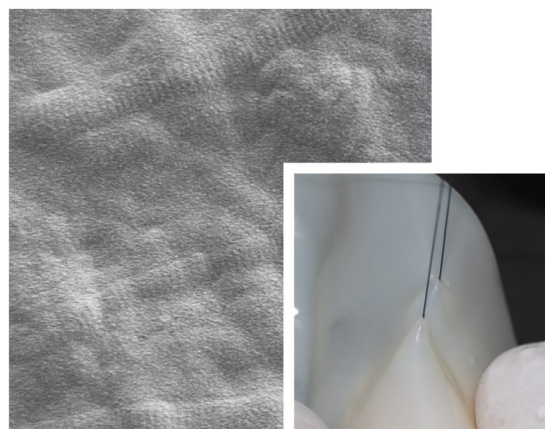
By Biom'Up

## DRIVE COVE :

A resorbable membrane for guided healing designed for GTR and GBR.

- Type-I acellular collagen membrane
- Resorbable barrier\*
- Can be sutured

\* Tested by an independent laboratory



SEM image : Surface of Cove showing how the collagen fibre structure is preserved. Cove has mechanical strength and elasticity due to the interlacing of collagen fibres and the preservation of their natural striated structure.

## Indications :

DRIVE COVE is indicated in the following cases:

- Reconstruction of bone dehiscence
- Protection of alveolar bone fillings (GBR)
- Guided tissue regeneration
- Protective covering for bone after trepanation for sinus lifts
- Regeneration of ridges in preparation for implants
- Protective covering of filled periodontal bone defect
- Used in combination with a bone filler e.g. Biom'Up's Matri™ BONE



Each single unit of DRIVE COVE is double packed and sterilized by irradiation.

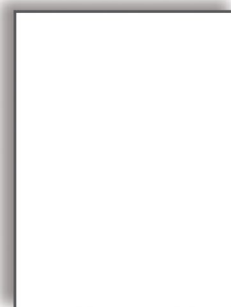
Dimensions (mm)	Re-order Code
15 x 25 mm	DCOVE 10-12d
20 x 30 mm	DCOVE 01-23d
30 x 40 mm	DCOVE 02-34d



15 x 25 mm



20 x 30 mm



30 x 40 mm

## Product safety :

Biom'Up's technology is based on a xenogenic acellular collagen. In addition, the Biom'Up collagen extraction process integrates validated steps for the inactivation of bacteria and viruses.

DRIVE COVE has been designed, developed and patented (FR2944706) by Biom'Up, in compliance with European regulations (CE marking) and applicable international standards..

## ■ ■ ■ The advantages of COVE DRIVE :

- Easy to position, resized and suture 4,6
- Perfect for guided regeneration of tissue 1,2,3
- Optimised mechanical and elastic properties provide an appropriate handling of dental surgeries 3,4,6
- Resorption time (2-3 months) in line with the natural regeneration/healing process 1,2
- Cove DRIVE can be resized 2,5

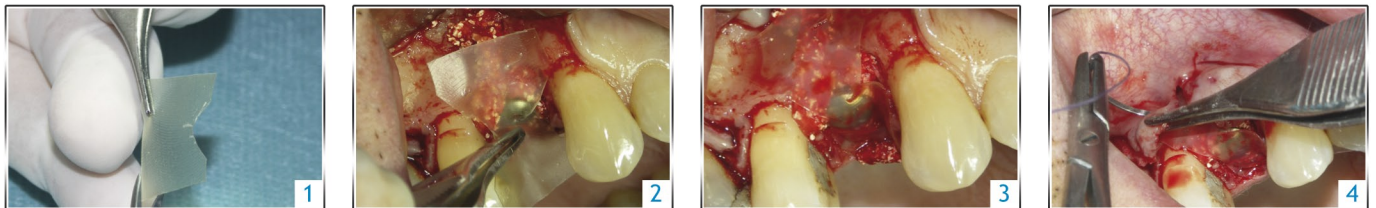
### Advice for us :

- Drive Cove can be re-sized and used moist or dry
- Drive Cove goes white after moistening in a physiological serum or fibrine
- It can be easily sutured
- The membrane handling eases its positioning

## ■ ■ ■ Clinical applications :

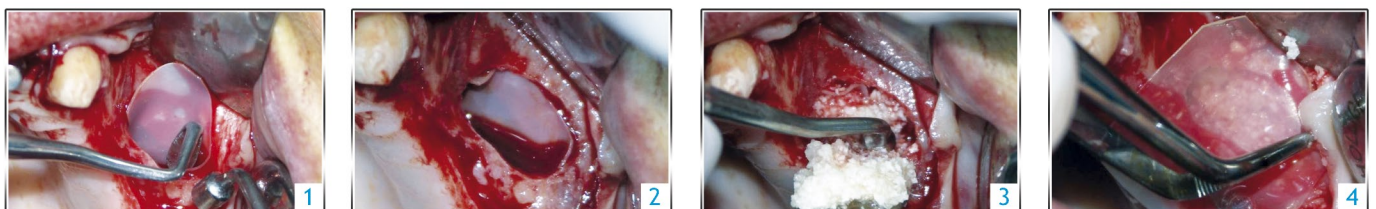
### Post-extraction filling

Cavity formed due to a gum invagination, necessitating an osseous filling (1). Bone graft (BioBank) (2). Cova Drive placement on the site allowing bone volume filled preservation and site protection (3). Hermetic sutures (4).



### Sinus lifting

Drive COVE membrane is hydrated in physiological serum and cut (1). Two Drive Cove membranes are placed : one to cover the bone window and the other to protect the expanded region (2) (3). Results after 3 weeks (4).

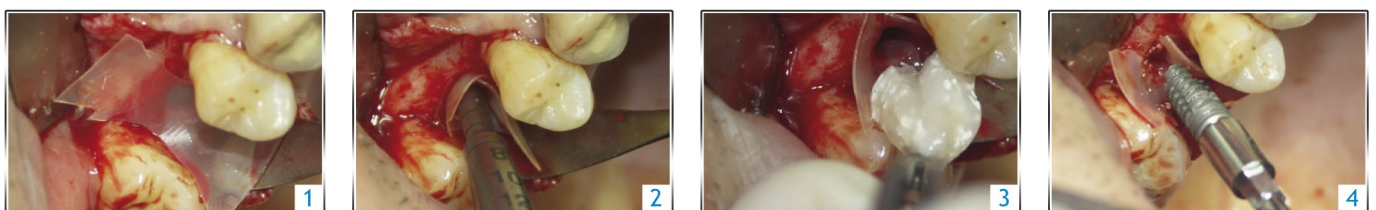


### Sinus lift – 2 ways : Crestal or lateral (Tulipe Technique)

Combined utilization of Drive bone and Drive Cove

The Drive Cove membrane is placed first and then introduced in the implant well under the sinus mucosa.

The intra-sinus filling occurs thanks to Drive Bone. Then, the implant is placed at the same time as the bone gra



See Drive cove utilization in the Clinical Case of the Month on the website

Contactez-nous sur notre site :  
**[www.driveimplants.com](http://www.driveimplants.com)**

Pour obtenir:  
Publications  
Iconographie



*La société Drive est certifiée ISO 9001 et 13485 / CE 1014*



14, place Jules Ferry  
69006 Lyon - France  
Tel : +33.9.62.30.67.27  
[contact@driveimplants.com](mailto:contact@driveimplants.com)

**[www.driveimplants.com](http://www.driveimplants.com)**